

# PERFECT STRIPOUT

*We get it done*

2022 CATALOGUE

STRIPOUT & DEMOLITION

[WWW.PERFECTSTRIPOUT.COM.AU](http://WWW.PERFECTSTRIPOUT.COM.AU)

1300 737 332







## ABOUT US

PERFECT STRIPOUT & DEMOLITION IS THE LEADER  
IN PROVIDING RELIABLE AND EFFICIENT DEMOLITION  
SERVICES TO CLIENTS ACROSS NEW SOUTH WALES.

Perfect Stripout and Demolition is the newest division within the Perfect Group. While Perfect has experienced rapid growth over the last few years, we have never forgotten how we got here, our valued clients. That's why we have created Perfect Stripout and Demolition, so we can continue to offer the same quality services on small and medium projects.

Part of a group of companies that include Perfect Contracting, Perfect Labour Hire and Perfect Concrete Care and Perfect Remediation our clients benefit from the combined experience and capabilities of five divisions that cover construction, demolition, labour-hire, specialised concrete services and remediation.

*We're dedicated to sustainability and ensure safety, quality and accountability standards across our company. So you can have the confidence we'll get your job done safely, with minimum impact on the environment.*

*We get it done*

## CORE VALUES



### POSITIVE ATTITUDE

We encourage a healthy, positive work environment. We believe that facilitating a work environment with happy, healthy staff is paramount to an effective and successful workplace.



### SAFETY AT WORK

Our staff are courteous, respectful and professional. They are expected to wear the uniform provided to them and to undergo training in safety and proper equipment use.



### PUNCTUALITY & HONESTY

Our staff are punctual, honest and responsible. They are expected to provide the highest level of service to all clients and to uphold the integrity of the company.



### STRONG TEAM

We only employ staff who have an attitude that reflects the culture of Perfect. That is, a tight-knit group that work together to perform the work at hand. We are dedicated, skilled and motivated to provide the best service for our clients and our company.



### CARE FOR EQUIPMENT

The quality of our equipment is high. We use only trusted brands such as Hilti, Tyrolit, Makita and Husqvarna. Our staff take pride in operating and maintaining this equipment.



### INCLUSIVE WORKPLACE

Perfect is an equal opportunity employer, we believe that everyone, no matter what race, sex or religion, should be afforded the same opportunities. That's why we have a diverse workforce from over 38 different countries.





## DETAILED DEMOLITION

Detailed demolition requires something that you usually don't associate with demolition, finesse. Cause lets be blunt, anyone can smash a wall or slab but there is a certain level of finesse is required when carrying out detailed demolition.

This is where we began. twelve years and literally hundreds of detailed demolition jobs later makes Perfect Sydney's premier detailed demolition contractor. As homeowners ourselves we grasp that these works can't be approached with the same methodology as civil and industrial jobs. They often require a gentler, more nuanced touch.

- Tight Access Demolition
- Demolition Robots
- Heritage Demolition
- Structural Propping
- Hazmat Removal
- Structural Remediation
- Steel Remediation
- Concrete Remediation
- Civil Excavation
- Tunneling Works



PROJECT 📍 TARONGA ZOO

### DETAILED DEMOLITION - TAYLOR

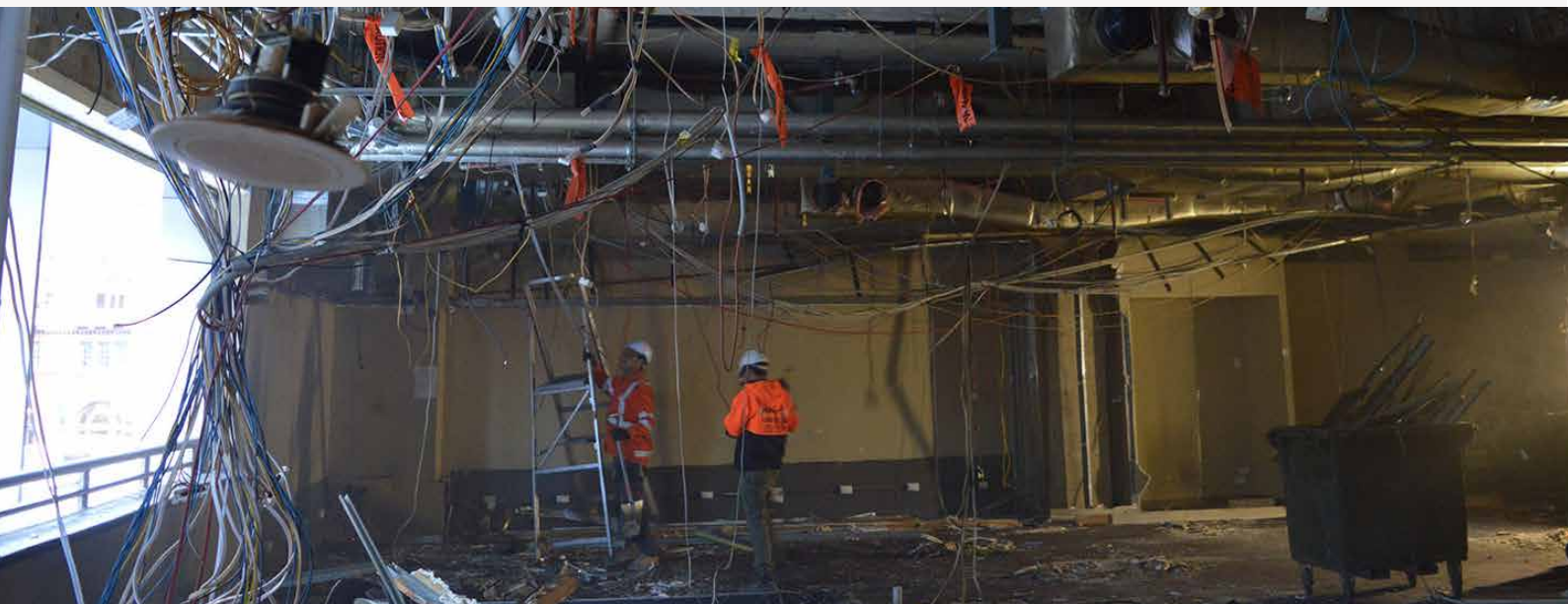
Perfect Stripout & Demolition carried out detailed heritage demolition works for our client Taylor, these works involved the demolition of a heritage rotunda at Taronga Zoo. Our experienced team members began by delicately demolishing the upper wall sections of the rotunda to expose the heritage timber columns before demolishing the remaining sections of the lower wall.



PROJECT 📍 LONGUEVILLE

### DETAILED DEMOLITION - FS Hough

Perfect Demolition was contracted by FS Hough for the demolition of residential a building, this project had very tight access excavation and all works were completed using a crane. Our Brokk110 was used for the excavation works. Excavation works included the demolition and disposal of timber-framed metal carport roof, carport slab 200mm depth, masonry support columns, tiled roof, concrete stairs.



## STRIPOUTS

The bones of Perfect's heavy demolition reputation lie in our beginnings: strip-outs and detailed demolition. These 'soft works' may be where we began but they certainly haven't been forgotten.

Perfect Stripout and Demolition has extensive experience in performing a multitude of stripout projects, from simple shop stripouts to entire ten-story buildings and hotels. Over the years we have built up an impressive fleet of machinery and equipment that improves both our efficiency and safety, but our most valuable asset is our people. Perfect's team members have considerable experience in the strip-out sector and know all the processes and procedures.

- Basic Stripouts
- Residential Stripout
- Commercial Stripout
- Multi-Level Stripout
- Shop Stripout
- Bathroom Stripout
- Back to Base Stripout



PROJECT

REDFERN

### MULTI-LEVEL STRIPOUT - Deicorp

Perfect Demolition was contracted by Deicorp to undertake commercial demolition works, including the removal and demolition of 4 sets of lifts across 12 levels. Strip out of entire 12 levels of office building back to the concrete shell, each floor being 500m<sup>2</sup> each. This included the removal of all existing floor finishes, ceiling tiles, topping slabs, carpet tiles, floor tiles, redundant services and cladding back to base.



PROJECT

SYDNEY CHILDREN'S HOSPITAL

### STRIPOUT - Horizon

Our team have just completed full demolition & strip out of the old Sunny's Cafe at Sydney Children's Hospital. Perfect were approached by our friends at Horizon – Residential & Commercial Builders and happily donated our manpower, equipment and tools to bring this project to life. We were glad to be able to contribute to such a worthy cause for this amazing organisation.





## HALF HOUSE DEMOLITION

Perfect has been carrying out half house demolitions since our inception in 2009. Since then we have expanded our fleet of machines and experienced team members capable of carrying out half house demolitions with military precision.

With our impressive fleet of excavators, trucks, machines, skip bins and experienced team members we can carry out half house demolitions with military precision. Our crews are well versed in site establishment, early "soft strip out" works, all the while separating the waste into our fleet of skip bins which leads to reduced tipping costs. Then bringing the structure down with medium machines for a swift demo.

- Half House Demolition
- Structural Demolition
- Roof Removal
- Strip Out
- Rubbish Removal
- Material Separation
- Waste Recycling & Management



PROJECT

CREMORNE

### HALF HOUSE DEMOLITION - Built by Dezin

Perfect Demolition has recently completed half house demolition works for our client Built by Dezin at a residential project in Cremorne. Our experienced crew carried out the soft strip out. For the rest of the project, our experienced operators used our Case 8t excavator and loaded all materials into our 15m3 skip bin for load out. All Brick was removed from the project and 100% recycled.



PROJECT

COOGEE

### HALF HOUSE DEMO - Bespoke Building

Perfect carried out half house demolition works for our client Bespoke Building in Coogee, NSW. These works involved removal of existing fire staircase, removal of 617m2 of suspended timber floor, removal of concrete slabs and associated floor beams and disposal of all structures and services. All works were completed in under a week and the client was very pleased with the results.



## RUBBISH REMOVAL

Rubbish removal can be one of those laborious jobs that costs time and with the recent rise in tipping rates, money. That's why Perfect has spent years honing our tailored our tub bin system that allows us to not only separate but move waste around rapidly.

That's where we come in, we have developed a foolproof system for separating rubbish and swiftly moving it off-site to either tip or recycling facilities. This dramatically reduces the cost of removing waste from the site and also helps us and our clients reach sustainability goals. So it's a win-win for everyone.

- Modified Tub Bin System
- Tipper Trucks
- Skip Bins
- Recycling Experts
- Hazmat Removal
- Electric Twinca Dumpers
- Cormidi Dumpers



PROJECT

📍 SURRY HILLS

### RUBBISH REMOVAL - Mainbrace Constructions

Perfect Contracting were engaged by Mainbrace Constructions to perform strip-out and rubbish removal works of three floors at 10-14 Waterloo St, Surry Hills. Our tub bin system reduces time on sites spent moving rubble or waste around. As the tub bins are on wheels and retro fitted with custom forklift grabs means we can easily fill multiple tub bins, separating waste and swiftly removed.



PROJECT

📍 MACQUARIE PARK

### RUBBISH REMOVAL - Inaphase

Our team members commenced work on this 1 Level office strip-out. Works included workstation removal, carpet removal, demolition of partition walls. Our team members separated all waste and rubbish into our Tub Bin system so that it could be easily recycled. Our Tub Bin system also cuts out double handling waste material on site, you can just fill them and wheel them out of the way.



## SMALL TRUCKS

### ISUZU TIPPER NLR 275

- Independent front coil suspension.
- Auto release body lock.
- Used for light deliveries to site.
- 5m3 / 2t Max load Capacity.

Note: LR Truck Driver

SKU	WIDTH	HEIGHT	CAPACITY
T001	1.39m	2.15m	5m3 / 2T



## TIPPER TRUCK RUBBISH REMOVAL

**8 FREE TUB BINS**

With our fleet of Isuzu Tipper Trucks we can provide you with Tub Bins which can be delivered to you on site. This allows you to easily separate waste which will save you money on tipping fee's while also helping the enviroment.

Our specialised Tub Bins have custom hook forks built into each of them. This means that they can quickly be loaded out with a rotating fork.

### TRUCK FLEET

Note: Truck Driver Required | Delivery & Consumable charges may apply

EQUIPMENT	SKU	MAX WEIGHT
ISUZU TIPPER TRUCK	TT001	4,500kg
ISUZU TIPPER TRUCK	TT002	4,500kg
ISUZU TIPPER TRUCK	TT003	4,500kg
ISUZU TIPPER TRUCK	TT004	4,500kg
ISUZU MR HIAB TRUCK	TT005	4,500kg
ISUZU MR TIPPER TRUCK	TT006	8,700kg
ISUZU 10 WHEELER	TT007	30,000kg
ISUZU 10 WHEELER	TT008	30,000kg
ISUZU 10 WHEELER	TT009	30,000kg



### TERMS & CONDITIONS:

- \* Up to 1T
- \* \$400 extra over 1T
- \* Extra \$100 charge on night shift and weekends
- \* Keep 8 x free tub bins on site, call us when they are full



## SKIP BINS



\*Prices subject to change according to tipping fees

### 5M3 SKIP BIN

SKU	RR001
Length	4.1m
Width	2.4m
Height	0.8 (1.55m w/hook)
Clean Concrete	<b>POA 5T MAX</b>
General Light Waste	<b>POA 3T MAX</b>
Mixed Heavy Waste	<b>POA 5T MAX</b>

General Waste: every tonne over 2T is charged at \$400 per tonne.

### 10M3 SKIP BIN

SKU	RR003
Length	5.1m
Width	2.45m
Height	1.1 (1.55m w/hook)
Clean Concrete	<b>POA 10T MAX</b>
General Light Waste	<b>POA 3T MAX</b>
Mixed Heavy Waste	<b>POA 8T MAX</b>

General Waste: every tonne over 3T is charged at \$400 per tonne.

### 18M3 SKIP BIN

SKU	RR005
Length	5.1m
Width	2.45m
Height	1.85m
PRICE PER LOAD - GENERAL LIGHT WASTE MAX TONNE - 4T	<b>POA 4T MAX</b>

General Waste: every tonne over 4T is charged at \$400 per tonne.

### 8M3 SKIP BIN

SKU	RR002
Length	5.1m
Width	2.45m
Height	0.92 (1.55m w/hook)
Clean Concrete	<b>POA 8T MAX</b>
General Light Waste	<b>POA 2.5T MAX</b>
Mixed Heavy Waste	<b>POA 8T MAX</b>

General Waste: every tonne over 2.5T is charged at \$400 per tonne.

### 15M3 SKIP BIN

SKU	RR004
Length	4.1m
Width	2.4m
Height	0.8 (1.55m w/hook)
PRICE PER LOAD - GENERAL WASTE MAX TONNE - 3.5T	<b>POA 3.5T MAX</b>

General Waste: every tonne over 3.5T is charged at \$400 per tonne.

### 30M3 SKIP BIN

SKU	RR006
Length	6m
Width	2.45m
Height	2.45m
PRICE PER LOAD - GENERAL LIGHT WASTE MAX TONNE - 8T	<b>POA 8T MAX</b>

General Waste: every tonne over 8T is charged at \$400 per tonne.

## JACKHAMMERS / DIAMOND SAWS



### HILTI TE60 JACKHAMMER

*Note: Skilled Labourer Required*  
*Delivery & Consumable charges may apply*

SKU	WEIGHT
JH001	6.8kg



### HILTI TE800 JACKHAMMER

*Note: Skilled Labourer Required*  
*Delivery & Consumable charges may apply*

SKU	WEIGHT
JH002	10.6kg

### JACKHAMMERS

*Note: Skilled Labourer Required | Delivery & Consumable charges may apply*

EQUIPMENT	SKU	WEIGHT
HILTI TE 60	JH001	5.7kg
HILTI TE 800	JH002	10.6kg
HILTI TE 1000	JH003	11.8kg
HILTI TE 1500	JH004	14.2kg
HILTI TE 3000	JH005	30kg



### HUSQVARNA K970 DEMO SAW

*Note: Skilled Labourer Required*  
*Delivery & Consumable charges may apply*

SKU	WEIGHT
DS001	11kg



### HILTI DCH 300 ELECTRIC SAW

*Note: Skilled Labourer Required*  
*Delivery & Consumable charges may apply*

SKU	WEIGHT
DS003	9.5kg

### DEMOLITION SAWS

*Note: Skilled Labourer Required | Delivery & Consumable charges may apply*

EQUIPMENT	SKU	WEIGHT
HUSQVARNA K970 DEMO SAW	DS001	11kg
HUSQVARNA K970 DEMO SAW	DS002	11kg
HILTI DCH 300 ELECTRIC SAW	DS003	9.5kg



### OXY KIT

*Note: Skilled Labourer Required*  
*Delivery & Consumable charges may apply*

SKU	WEIGHT
OK001	34kg



### HILTI RECIPROCATING SAW

*Note: Skilled Labourer Required*  
*Delivery & Consumable charges may apply*

SKU	WEIGHT
RS001	3.8kg

### OTHER EQUIPMENT

*Note: Skilled Labourer Required | Delivery & Consumable charges may apply*

EQUIPMENT	SKU	WEIGHT
WEKA CORE DRILL	CD001	5.9kg
HILTI DG150 GRINDER	GR001	7.2kg



## EXCAVATORS

### KUBOTA 1.7T MINI-EXCAVATOR

- Powered by a 17HP Kubota engine.

**Note: Skilled Operator Required**

Float charges may apply

SKU	MODEL	WIDTH	LENGTH	HEIGHT	MAX DEPTH
PL003	1.7T	950mm	3.05m	2.3m	2.31m



### SMALL EXCAVATOR FLEET

**Note: Operator Required | Delivery & Consumable charges may apply**

EQUIPMENT	SKU	WEIGHT
YANMAR 1T	PL001	1,035kg
KUBOTA 2.5T	PL004	2,545kg
YANMAR 3.5T	PL005	3,535kg
KUBOTA 5.5T	PL007	5,470kg

## SKID STEER LOADERS

### BOBCAT S590

- Electronic climate control system delivers the highest-capacity heating and cooling available.

**Note: Skilled Operator Required**

Float charges may apply

SKU	MODEL	WIDTH	LENGTH	HEIGHT	MAX WEIGHT
PL008	EC290B	1.64m	3.37m	1.97m	1,935kg



### SKID STEER FLEET

**Note: Skilled Operator Required | Delivery & Consumable charges may apply**

EQUIPMENT	SKU	WEIGHT
BOBCAT S70	PL009	1,268kg
KUBOTA POSI-TRACK	PL011	4,100kg

## ATTACHMENTS

### MUD BUCKET



SKU	WEIGHT
EA001	158kg

### GRABS



SKU	WEIGHT
EA002	184kg

### OTHER ATTACHMENTS

**Note: Skilled Labourer Required | Delivery & Consumable charges may apply**

EQUIPMENT	SKU	WEIGHT
TRENCH BUCKET	EA003	152kg
HAMMER	EA004	184kg
AUGER	EA005	137kg

## DUMPERS

### CORMIDI DUMPER

- 1.45 m tipping height with precision controls.
- Powerful 13 hp petrol and 10 hp diesel engines.
- Small enough to fit large doorways and gates.
- Fully hydrostatic controls and drive train.
- Easy to learn controls and intuitive dashboard.

**Note: Skilled Operator Required**  
Float charges may apply

SKU	MODEL	WIDTH	LENGTH	HEIGHT	MAX WEIGHT
PL017	PL017	695mm	1.68m	1.67m	600kg



### TWINCA DUMPER

- With a height of 1053 mm, the ES-800 has a very comfortable loading-height.
- A fully charged battery can run the machine throughout a full working day and can be re-charged within 5-6 hours.
- The ES-800 offers stepless adjustment of speed.
- The ES-800 is equipped with hydraulic high lift.

**Note: Skilled Operator Required**  
Float charges may apply

SKU	MODEL	WIDTH	LENGTH	HEIGHT	MAX WEIGHT
PL012	PL012	920mm	2.58m	98mm	800kg



### DUMPER / ROLLER FLEET

*Note: Skilled Operator Required | Delivery & Consumable charges may apply*

EQUIPMENT	SKU	MAX WEIGHT
TWINCA ELECTRIC DUMPER	PL012	800kg
TWINCA ELECTRIC DUMPER	PL013	800kg
TWINCA ELECTRIC DUMPER	PL014	800kg
TWINCA ELECTRIC DUMPER	PL015	800kg
TWINCA ELECTRIC DUMPER	PL016	800kg
CORMIDI DUMPER	PL017	600kg



## LABOUR HIRE



### GENERAL LABOURERS

Our general labourers while not as experienced as our demolition or skilled labourers but still have the correct attitude and desire to be a valuable asset for you.

#### CAPABLE OF THE FOLLOWING TASKS:

- Manual Handling
- Site Cleaning
- Load Skip Bins
- Heavy Lifting
- Setting up Site Safety Barriers
- Mixing Concrete



### DEMOLITION LABOURERS

Our demolition labourers have been working in the industry for years and know-how to carry out detailed demolition works in their sleep.

#### CAPABLE OF THE FOLLOWING TASKS:

- Detailed Demolition
- Strip Out
- Jackhammering
- Recipro Sawing
- Demo Sawing
- Establish Exclusion Zones



### SKILLED LABOURERS

Our skilled labourers carry multiple tickets and competencies from EWP under and over 11m to Confined Space and Working at Heights.

#### CAPABLE OF THE FOLLOWING TASKS:

- Oxy Cutting
- EWP Operating
- Confined Space
- Working at Heights
- Forklift Operating
- Telehandler Operating
- Bobcat Operating



### OPERATORS

We have several Operators at our disposal to carry out all kinds of work like demolition, trenching and civil excavation.

#### CAPABLE OF THE FOLLOWING TASKS:

- Bulk Load Out
- Final Trim
- Deep Excavation
- Demolishing Small Structures
- Utility and Drainage Trenching
- Auger Post Holes
- Operating Belly Dumpers

## CERTIFICATION



ISO



CM3



LOCAL GOVERNMENT APPROVED CONTRACTOR

## AWARDS



WINNERS OF EXCELLENCE IN SUSTAINABILITY



WINNERS OF OUTSTANDING EMPLOYER OF CHOICE



WINNERS OF EXCELLENCE IN WORKPLACE INCLUSION

## LICENCES



UNRESTRICTED  
DEMOLITION LICENCE

AD211896



FRIABLE ASBESTOS  
REMOVAL LICENCE (Class A)

AD212731



NON FRIABLE ASBESTOS  
REMOVAL LICENCE (Class B)

AD212250

## INSURANCE



ASBESTOS REMOVAL  
LIABILITY



PUBLIC & PRODUCTS  
LIABILITY



WORKERS COMPENSATION  
INSURANCE





# PERFECT

*We get it done*



PERFECT GROUP is comprised of four ISO certified companies: Perfect Contracting, Perfect Labour Hire Perfect Concrete Care and Perfect Remediation. Our clients benefit from the combined experience and capabilities of four divisions.



#### PERFECT CONTRACTING

Perfect Contracting is an industry-leading unrestricted demolition and hazmat removal contractor, working with commercial, industrial and government clients on projects across NSW.

- ✓ DEMOLITION
- ✓ MAKE SAFE
- ✓ WASTE REMOVAL
- ✓ ASBESTOS REMOVAL

[www.perfectcontracting.com.au](http://www.perfectcontracting.com.au)



#### PERFECT LABOUR HIRE

Perfect Hire expertise lie in providing quality skilled labour, trades and operators for large infrastructure projects all across NSW.

- ✓ SKILLED LABOUR HIRE
- ✓ RECRUITMENT
- ✓ TRADESMAN HIRE
- ✓ TEMP TO PERMANENT

[www.perfecthire.com.au](http://www.perfecthire.com.au)



#### PERFECT CONCRETE CARE

Our Concrete Care division that specialises in all forms of concrete cutting, coring, scanning, patching, grinding and polishing.

- ✓ CONCRETE GRINDING
- ✓ CONCRETE CUTTING
- ✓ CONCRETE CORING
- ✓ CONCRETE SCANNING

[www.perfectconcretecare.com.au](http://www.perfectconcretecare.com.au)



#### PERFECT REMEDIATION

Our Remediation division possess dynamic capabilities, spanning from structural steel repairs to concrete crack injection, sealing waterproofing, caulking, membranes and protective coatings.

- ✓ REMEDIATION
- ✓ REFURBISHMENT
- ✓ CONCRETE REMEDIATION
- ✓ STEEL REMEDIATION

[www.perfectremediation.com.au](http://www.perfectremediation.com.au)





# **PERFECT** **STRIPOUT** *We get it done*



Scan the QR code to download  
a soft copy of this proposal

You don't have to install any app, simply  
use your phone camera.



[www.perfectstripout.com.au](http://www.perfectstripout.com.au)



[info@perfectstripout.com.au](mailto:info@perfectstripout.com.au)



(02) 8021 1784



1300 737 332



**PERFECT STRIPOUT Pty Ltd**

4/8 Lilian Fowler Place

Marrickville NSW 2204